

HUNTERS®

HERE TO GET *you* THERE

17 Lea Mill Park Drive, Yeadon, Leeds, LS19 7YH

Asking Price £280,000

Property Images



HUNTERS®

HERE TO GET *you* THERE

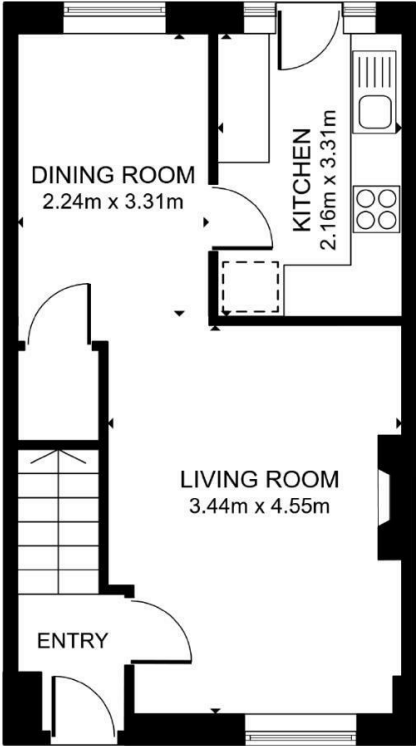
Property Images



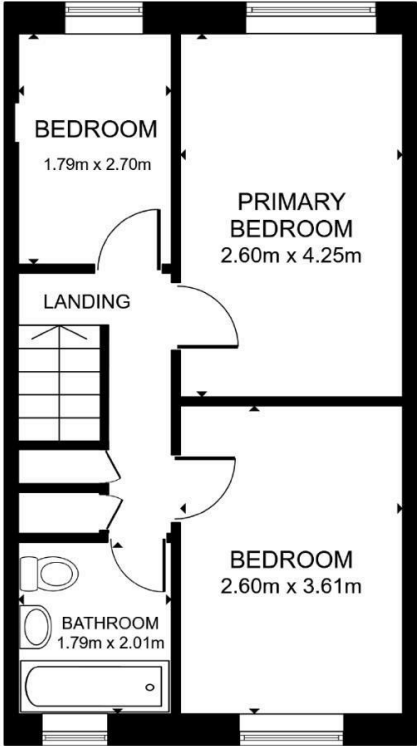
HUNTERS[®]

HERE TO GET *you* THERE

Property Images



FLOOR 1

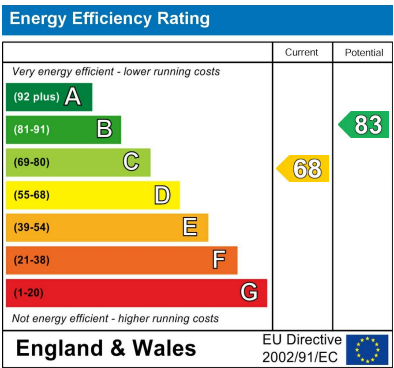


FLOOR 2

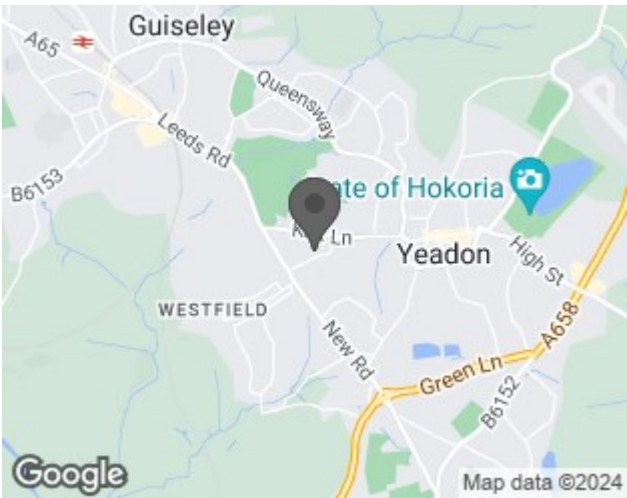
GROSS INTERNAL AREA
FLOOR 1 36.7 m² FLOOR 2 36.7 m²
TOTAL: 73.4 m²
SIZES AND DIMENSIONS ARE APPROXIMATE, ACTUAL MAY VARY.



EPC



Map



Details

Type: House - Semi-Detached Beds: 3 Bathrooms: 1 Receptions: 2 Tenure: Freehold

Summary

This charming three-bedroom stone semi-detached residence is nestled in a peaceful cul-de-sac, boasting delightful gardens that will surely capture your heart. Ideal for a young family, first-time buyers, or a professional couple, this property offers a warm and inviting atmosphere that welcomes you from the moment you step inside.

Features

• ATTRACTIVE STONE SEMI • GARAGE AND DRIVEWAY • CUL DE SAC
POSITION • PLEASANT REAR GARDEN WITH SUNNY ASPECT • OPEN PLAN LOUNGE /
DINER • CLOSE TO SHOPS AND SCHOOLS • CLOSE TO TRAIN STATION • HUNTERS 360
TOUR